



NINGBO WEIRSEN ELECTRICAL CO., LTD.

www.weirsen.com

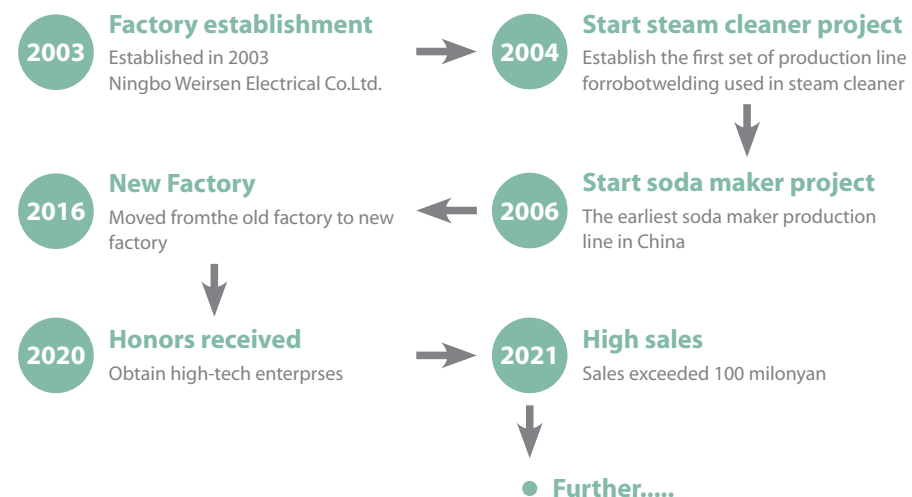


Ningbo Weirsen Electrical Co., Ltd. founded in 2003. It is located in the well-known industrial cluster of household appliance and economic center around Shanghai in China-Cixi, Ningbo adjacent to Ningbo port. It is a household electrical appliance manufacturer integrating design, development, production and sales. In the past year, we focused on the research and development of steam cleaner and soda maker. Weirsen has complete manufacturing techniques and production capacities.

It's the earliest factory with robot welding technology. The company has obtained ISO9001, BSCI, CE, GS, RoHS, Reach and others certification. We sincerely welcome you to establish a partnership with us, we will provide customers solution to the household electrical appliance with perfect quality, more competitive price, strong delivery capabilities.

President: Mr. Wu Dengchuan
General manager: Ms. Jing Huizhen

发展历程 | DEVELOPMENT HISTORY



Steam Cleaner

WJ528

- Power: 1500W
- Frequency: 50/60Hz
- Water tank: 1.5L
- Pressure: 4bar
- Heat time: 10mins
- Working time: 40mins
- G.W.: 5.6KGS
- N.W.: 4.6KGS
- Dimension of giftbox: 535x340x295mm

Container Loading Quantity:

500PCS/20FT, 1000PCS/40FT, 1200PCS/40HQ



Stainless Steel Water Tank



Steam Cleaner



Steam Cleaner

WJ518

- Power: 1500W
- Frequency: 50/60Hz
- Water tank: 1.2L
- Pressure: 4bar
- Heat time: 10mins
- Working time: 40mins
- G.W.: 5.5KGS
- N.W.: 4.5KGS
- Dimension of giftbox: 470x290x270mm

Container Loading Quantity:

680PCS/20FT, 1350PCS/40FT, 1600PCS/40HQ



Steam Cleaner



Steam Cleaner

WJ538

- Power: 1500W
- Frequency: 50/60Hz
- Water tank: 1.5L
- Pressure: 4bar
- Heat time: 10mins
- Working time: 40mins
- G.W.: 7.5KGS
- N.W.: 6.0KGS
- Dimension of giftbox: 515X365X295mm

Container Loading Quantity:

540PCS/20FT, 1080PCS/40FT, 1250PCS/40HQ



weirsen
Home Appliance



Steam Cleaner



Steam Cleaner

WJ558

- Steam Cleaner
- Power: 2000W
- Voltage: 220V-240V
- Frequency: 50/60Hz
- Water tank: 1.5L
- G.W: 5.5KGS
- N.W: 4.5KGS
- Dimension of color box: 470X290X270mm

Container Loading Quantity:

500PCS/20FT, 1000PCS/40FT, 1200PCS/40HQ

**POWER
2000W**



Rotating Brush



Steam Cleaner



Steam Cleaner

WJ568

- Power: 1500W
- Frequency: 50/60Hz
- Water tank: 1.5L
- Pressure: 4bar
- Heat time: 10mins
- Working time: 40mins
- G.W.: 7.5KGS
- N.W.: 6.0KGS
- Dimension of giftbox: 515X365X295mm

Container Loading Quantity:

540PCS/20FT, 1080PCS/40FT, 1250PCS/40HQ



- ♦ Organic
- ♦ Non-Toxic
- ♦ High Pressure



Standard accessory kit



2pcs Long Wand



Floor Scrub Brush



Windows Brush +Textile iron



Adaptor For Nozzle & All Brushes



Adaptor for floor scrub brush



Big Round Brush



Small Round Brush



High Pressure Nozzle



Measuring Cup



Funnel



Cloth For Scrub Brush

Optional accessory kit



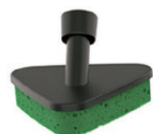
Big copper brush



Small copper brush



Grout Brush



Triangle pad



Round Scrub Pad



Steam Mop

Soda Maker

More sustainable
and eco-friendly



Save **180**

One CO₂ Cylinder (NOT Include) makes
up to 16 gallons of sparkling water

Single-use plastic bottles
(11oz)



No Electrical & Batteries
Durable & Environmental
Convenient & Efficient

Soda Maker

WJS18

- PET bottle capacity: 1L
- Unit Size: 19.5x13x42cm
- Dimension of color box: 20x14x42.5cm
- Dimension of carton box: 43.5x41.5x44cm

Container Loading Quantity:

2100PCS/20FT, 4380PCS/40FT, 5100PCS/40HQ



Soda Maker



Soda Maker

WJS38

- PET bottle capacity: 1L
- Unit Size: 19.5x14x44cm
- Dimension of color box: 20x14.5x44.5cm
- Dimension of carton box: 45x41.5x46cm

Container Loading Quantity:

1950PCS/20FT, 4050PCS/40FT, 4740PCS/40HQ



Soda Maker



Soda Maker

WJS28

- PET bottle capacity: 1L
- Unit Size: 19x14x42cm
- Dimension of color box: 19.5x14.5x42.5cm
- Dimension of carton box: 45x40.5x44cm

Container Loading Quantity:

2094PCS/20FT, 4338PCS/40FT, 5100PCS/40HQ



Soda Maker

weirsen
Home Appliance



Soda Maker



Soda Maker

WJS708

- PET bottle capacity: 1L
- Unit Size: 19.5x14x43cm
- Dimension of color box: 20x14.5x43.5cm
- Dimension of carton box: 45x41.5x45cm

Container Loading Quantity:

1980PCS/20FT, 4140PCS/40FT, 4854PCS/40HQ



Portable Soda Maker

Sparkle Anything
No Loss Of Fizz Save Time & Money



weirsen
Home Appliance



Soda Maker



Soda Maker

WJSP-011

- PET bottle capacity: 1L
- Unit Size: 20.2x11x43.5cm
- Dimension of color box: 20.5x11.5x44cm
- Dimension of carton box: 42.5x36x45.5cm

Container Loading Quantity:

2400PCS/20FT, 4998PCS/40FT, 5856PCS/40HQ



weirsen
Home Appliance



Soda Maker



Soda Maker

WJS803

- PET bottle capacity: 1L
- Unit Size: 25.3x13.5x44cm
- Dimension of color box: 26x14x44.5cm
- Dimension of carton box: 57.5x27.5x46cm

Container Loading Quantity:

1540PCS/20FT, 3188PCS/40FT, 3740PCS/40HQ



weirsen
Home Appliance



PERFECT INFUSION

Scientifically designed vent holes creates a perfect gas infusion every time



ONE KEY ACTIVATION

Injects CO₂ & Releases with one simple touch to create the perfect beverage



LOCK BUCKLE DESIGN

Ergonomic design eliminates leaks



DURABLE BASE

Easy to clean detachable tray

Soda Maker



WJSP-012

- PET bottle capacity: 1L
- Unit Size: 25x13.5x45cm
- Dimension of color box: 25.5x14x45.5cm
- Dimension of carton box: 57.5x27x47cm

Container Loading Quantity:

1536PCS/20FT, 3180PCS/40FT, 3728PCS/40HQ



Portable Soda Maker

WJSP-013

- PET bottle capacity: 1L
- Unit Size: 8.5x8.5x34cm
- Dimension of color box: 9x9x34.5cm
- Dimension of carton box: 46.5x37.5x36cm

Container Loading Quantity:

8920PCS/20FT, 18480PCS/40FT, 21660PCS/40HQ

*30 seconds to make
bubble drink*





PET BOTTLE

- Capacity:1L
- Maximum line:850ML
- Material:PET
- Suitable Model:
- WJS18/WJS28/WJS38



STAINLESS STEEL PET BOTTLE

- Capacity:1L
- Maximum line:850ML
- Material:PET/stainless steel
- Suitable Model:
- WJS18/WJS28/WJS38



PET BOTTLE K01

- Capacity:1L
- Maximum line:850ML
- Material:PET
- Suitable Model:
- WJS708/P011/P02



PET BOTTLE K01-1

- Capacity:1L
- Maximum line:850ML
- Material:PET
- Suitable Model:
- WJS708/P011/P02



PET BOTTLE

- Capacity:0.5L
- Maximum line:400ML
- Material:PET
- Suitable Model:
- WJS18/WJS28/WJS38



CYLINDER

- Material:aluminum
- Capacity :0.6L
- Weight(empty with balve):752g



Ningbo Weirsen Electrical Co., Ltd.

Factory Add: No.58 Hetong Road, zhouxian town, Cixi City, Ningbo China
Tel: 86-0574-63303302 63330738 Fax: 86-574-63330740 Post code: 315324

E-mail: aj@orsen.com.cn jhz@orsen.com.cn

[Http://www.weirsen.com](http://www.weirsen.com)